

# TEXTILE SCIENCE

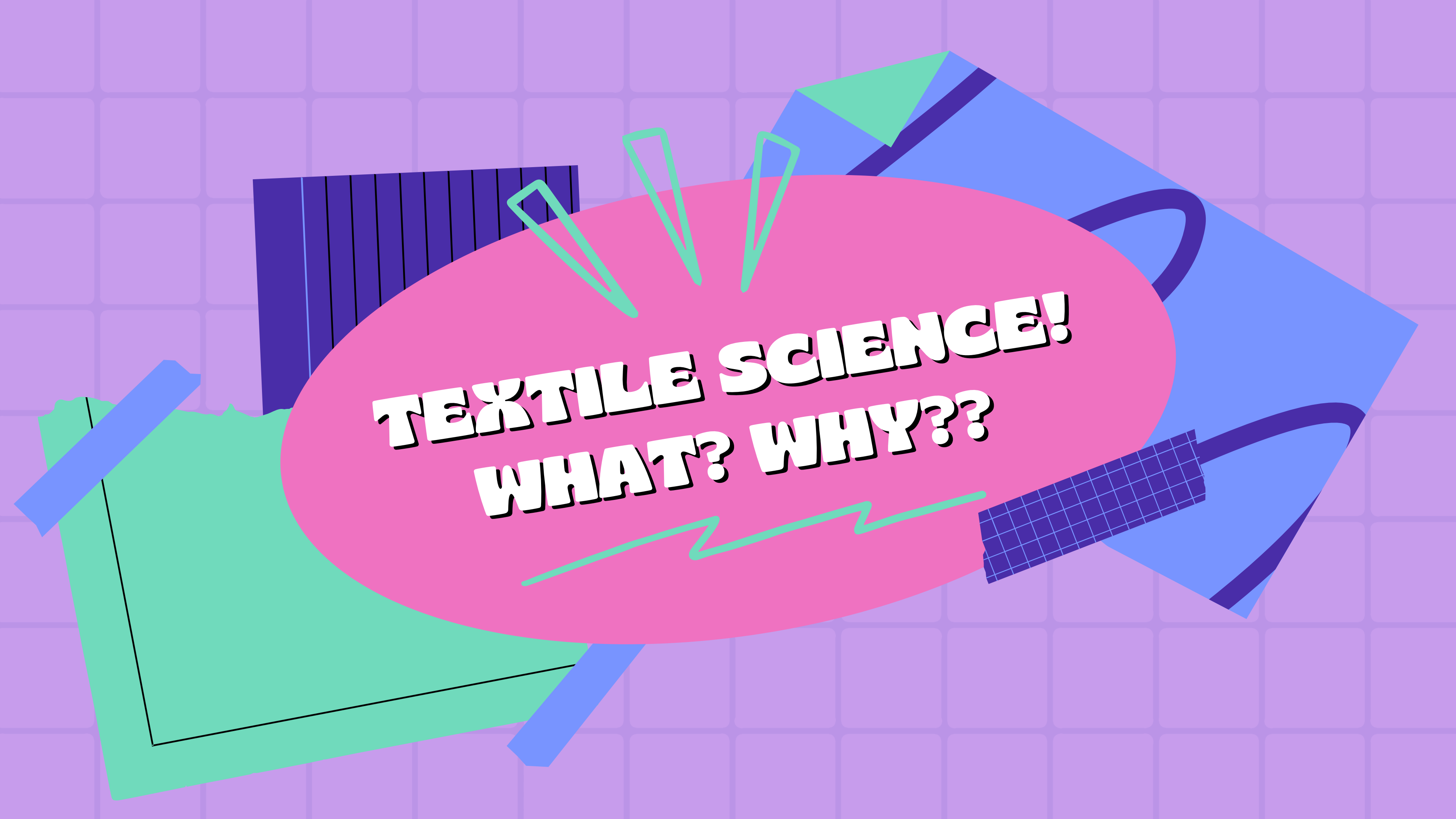
**PROJECT  
LEADER  
TRAINING**



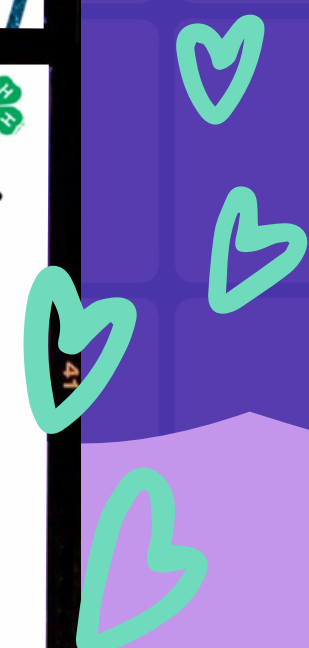
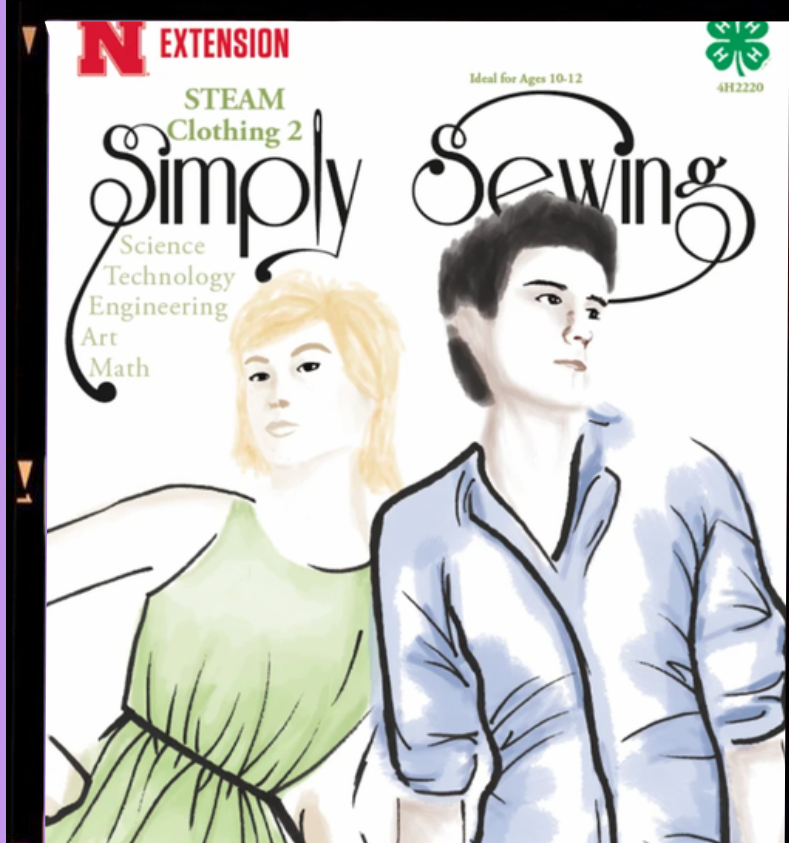
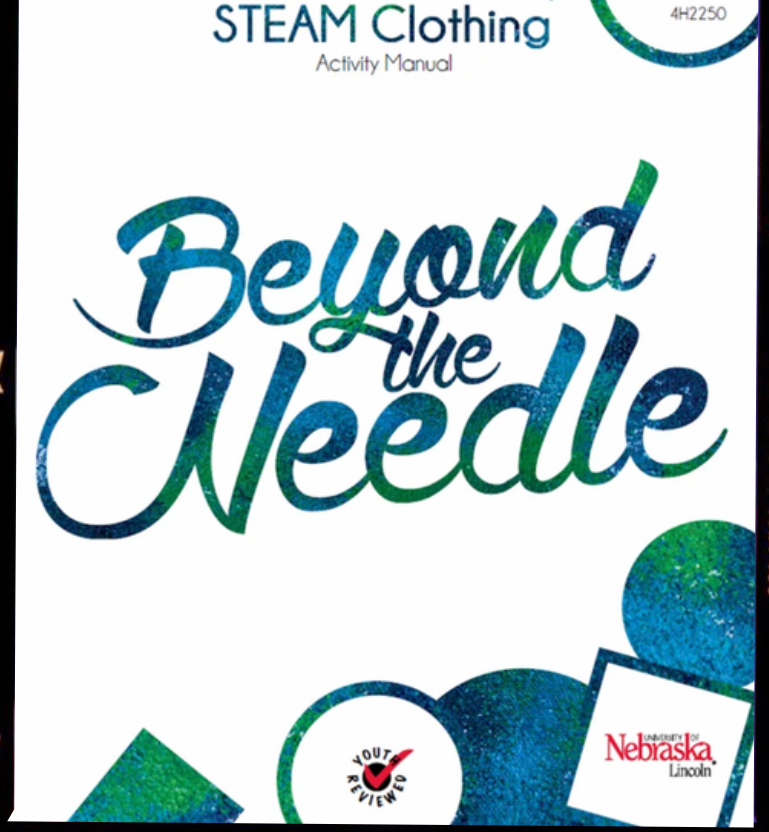
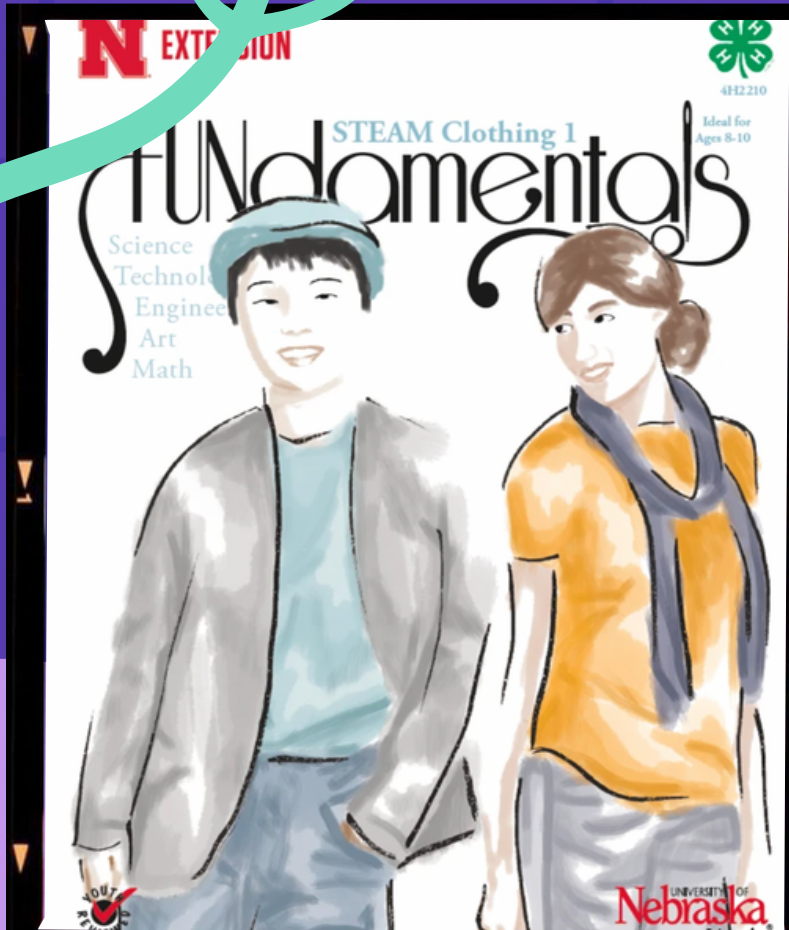
# JACIE MILIUS

4-H Educator  
Nebraska Extension  
Gage County  
[jacie.milius@unl.edu](mailto:jacie.milius@unl.edu)



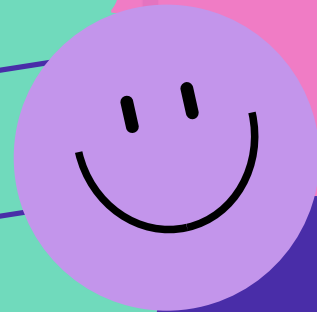


**TEXTILE SCIENCE!**  
**WHAT? WHY??**



# STEAM CLOTHING CURRICULA

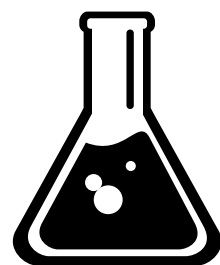
[shop4-h.org](http://shop4-h.org)



### **Fabric Zap!**

STEAM Clothing 1

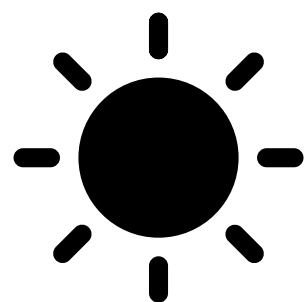
Generate Static Electricity - Observe how fabrics relate to Static Electricity



### **Oops! Did I do that?**

STEAM Clothing 2

Explore different chemical reactions on fibers.



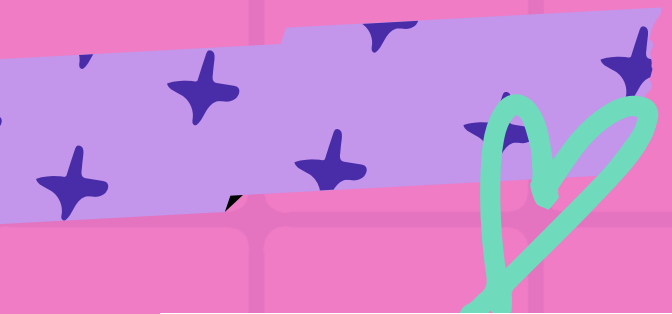
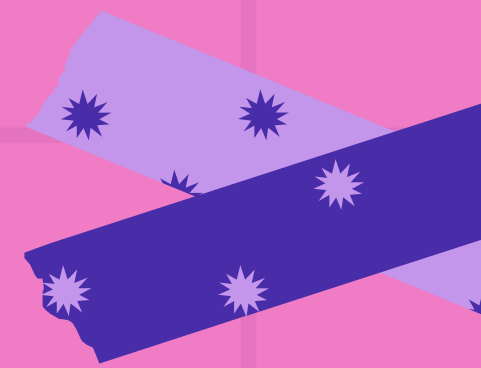
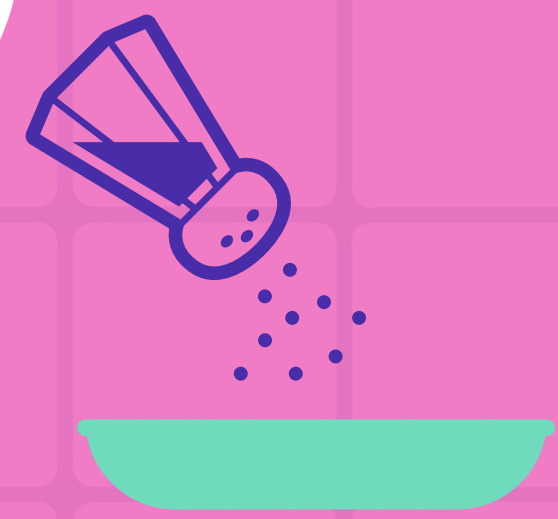
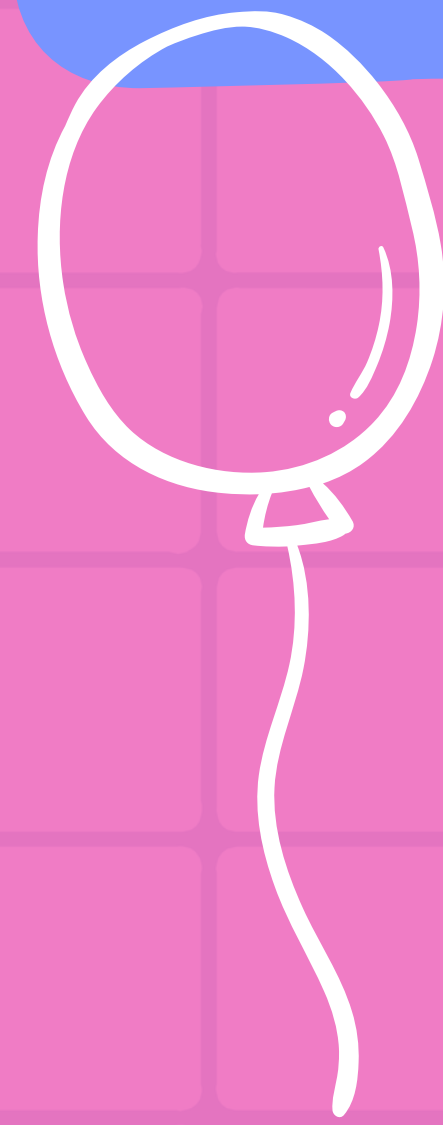
### **I'm Melting, I'm Melting!**

STEAM Clothing 2

Understand the effect that color has on temperature.

# FABRIC ZAP!

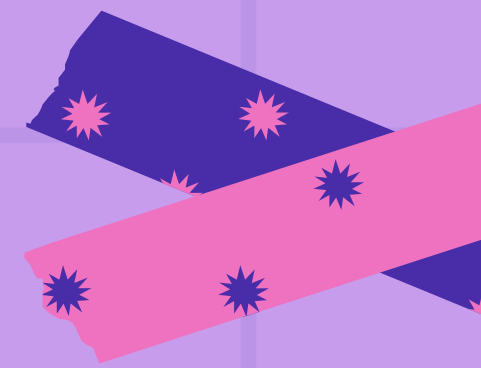
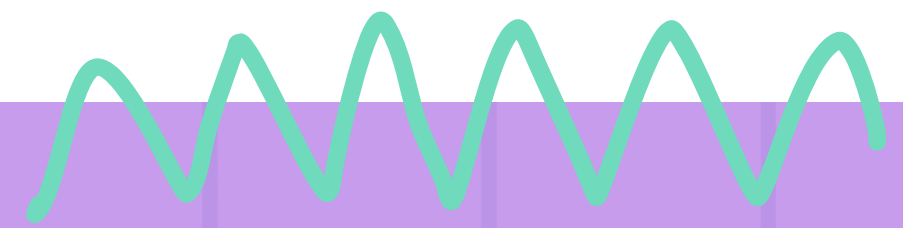
	Wool	Silk	Cotton	Nylon	Polyester	Optional: Animal Fur or Hair
Fiber Content Fiber Category						
Approximate Height salt "jumped" when static action occurred						
Approximate Amount salt when static action occurred						
Approximate Time when static action decreased						



**OOPS!  
DID I DO  
THAT?**

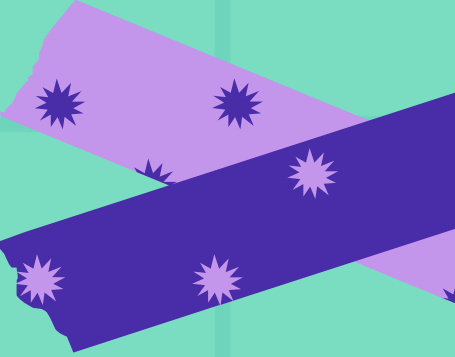
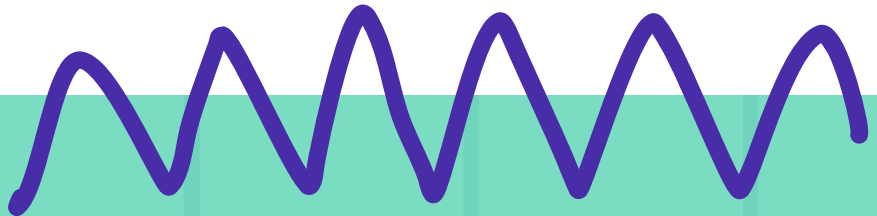
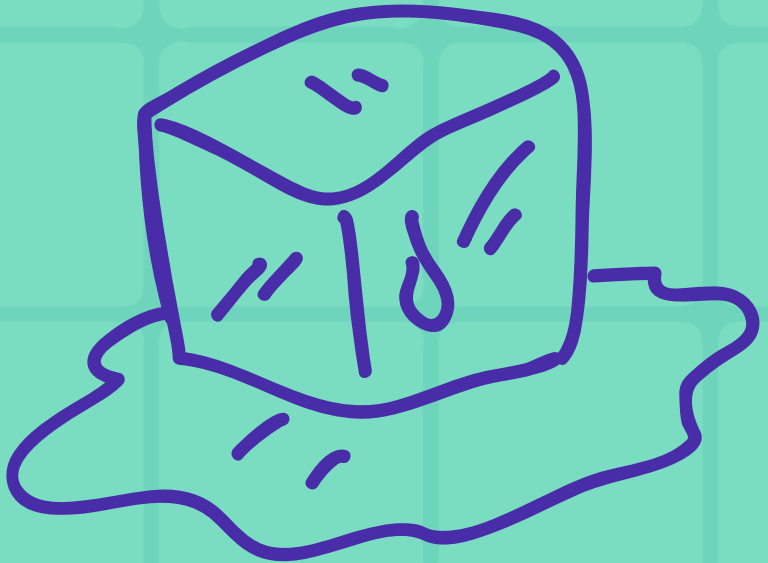
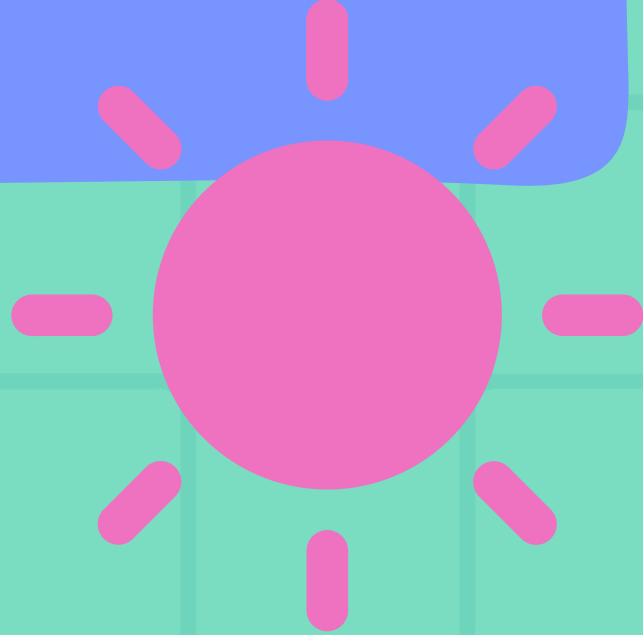


	Natural or Synthetic	Fingernail Polish Remover (acetone)	Chlorine Bleach (sodium hypochlorite)
Cotton			
Wool or Silk			
Polyester			
Acetate			



	Swatch 1	Swatch 2	Swatch 3	Swatch 4	Swatch 5
Fiber Color					
Fiber Content (from care label)					
Fabric Category (woven, knit, nonwoven)					
Time to melt ice cube					

**I'M MELTING!  
I'M MELTING!**





# RESOURCE PAGE

The Textile Kit (swatches of different fibers): <https://go.unl.edu/65c3>

Mood fabrics:  
<https://www.moodfabrics.com/>

Video on textile testing:  
<https://go.unl.edu/ad42>

Inside textile testing lab:  
<https://go.unl.edu/nt08>

Burn test video:  
<https://go.unl.edu/57u6>

Sun protective clothing video:  
<https://go.unl.edu/vbnf>

Sun protective clothing & heat:  
<https://go.unl.edu/2to4>